

CORRIDOR FEATURE CATALOG

A visual layering of our analysis: cataloging where natural and built features exist throughout The Meadoway and analyzing what it means when the layers come together. We started with the existing physical base of the corridor – the road crossings, ravines, and parklands. Next, we analyzed the intensity of usage within and adjacent to the corridor, based on the location of existing residential and employment densities, current community hubs, school grounds, future planned communities, and hydro infrastructure - to understand where people are most likely to use the corridor. We then studied where multi-modal connections can be made to existing trails or transit corridors. Finally, we merged all these layers together and used the resulting visualization to characterize segments of the corridor, as seen below.



SECTION 1: BERMONDSEY-WESTERN GATEWAY

EAST DON TRAIL TO PHARMACY AVE

PERKINS
+ WILL

A project of
Toronto and Region
Conservation
Authority

The
Meadoway
COMMUNITY POWERED GREEN SPACES

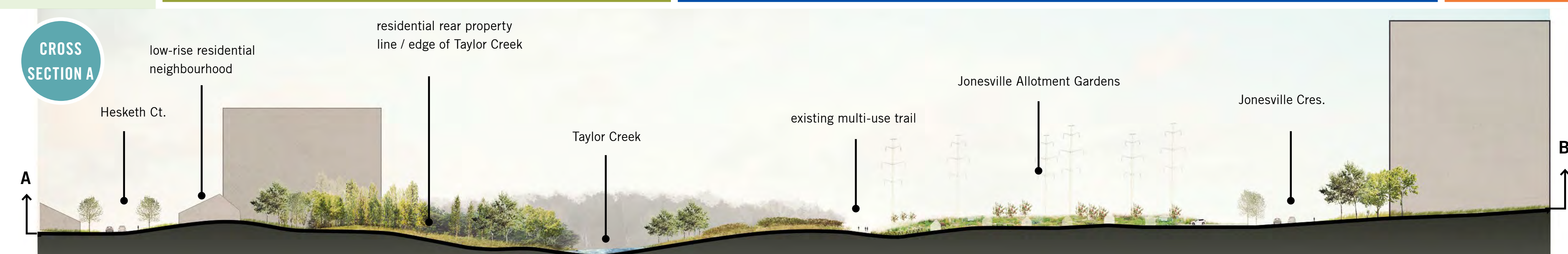


WILD / IMMERSIVE ZONE

WESTERN GATEWAY

EDUCATION ZONE

WILD / IMMERSIVE ZONE



EMERGING VISION

The Bermondsey-Western Gateway will utilize a variety of planting including gardens to emphasize the entrance to The Meadoway. With the existing community use (i.e. Jonesville Allotment Garden), the apartment neighbourhoods surrounding the corridor, and the implementation of the new Eglinton Crosstown LRT, this is a potential future education hub. The interface with the natural creek ridge and the Don River provides an intimate connection to nature.

IDEAS



Signage

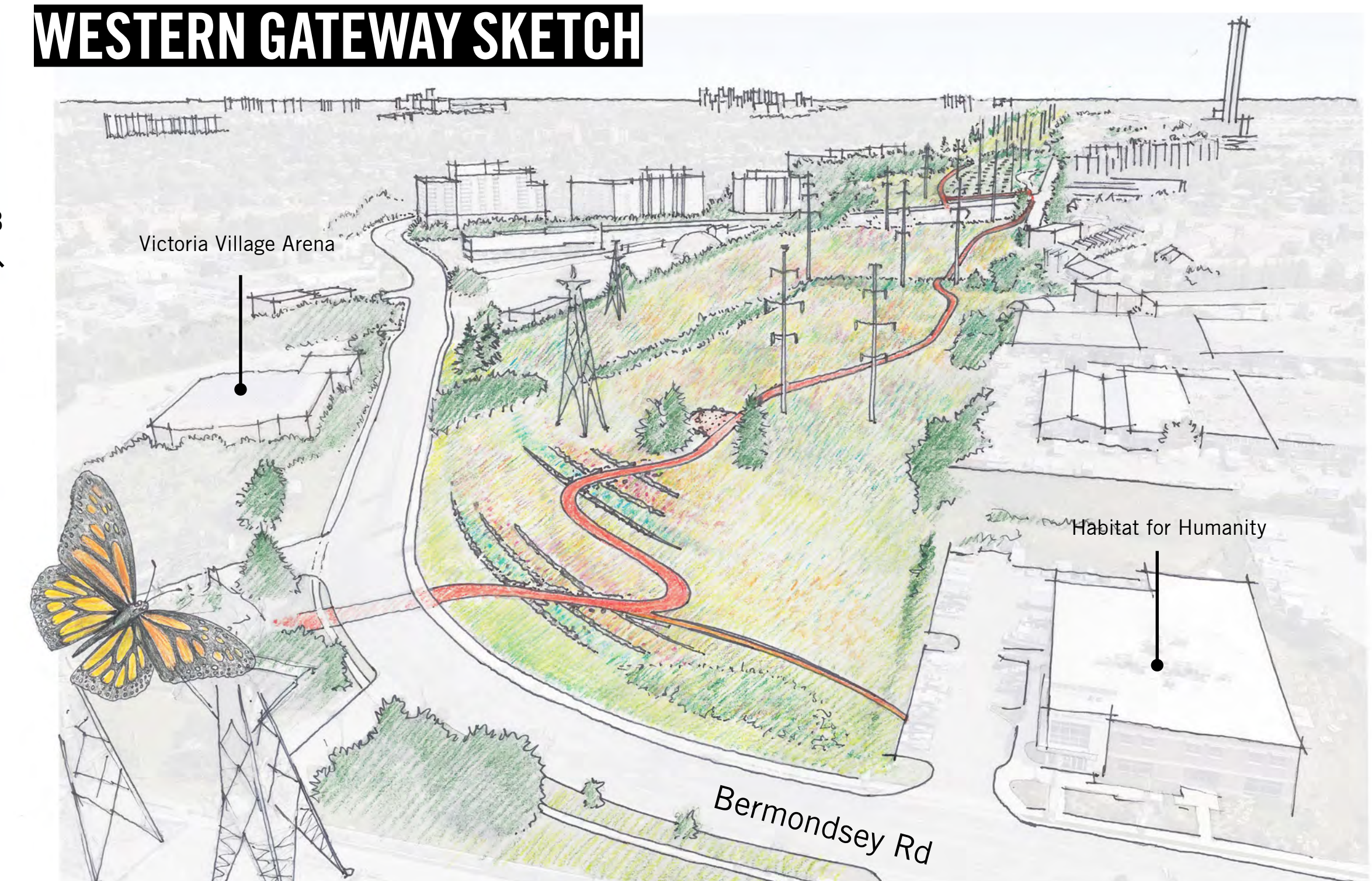


Gardens to Frame Gateway



Educational Signage

WESTERN GATEWAY SKETCH



SECTION 2: MASSEY WILDS

PHARMACY AVE TO KENNEDY RD

PERKINS
+ WILL

A project of
Toronto and Region
Conservation
Authority

The
Meadoway
COMMUNITY POWERED GREEN SPACES



EMERGING VISION

Centered around the Massey Creek, this section of the corridor will have the level of activity increase gradually as it reaches Pharmacy Ave to the west and Kennedy to the east. Passive stretches of restored meadows provide a relaxing and stable travelling experience, leading to and from the nodes at the ends. By Wexford Park, the recreation hub will provide additional amenity to support the new residential and employment density from the Golden Mile redevelopment, whereas the existing Givendale allotment gardens shall be enhanced with furniture and gathering spaces.

IDEAS



Pop-up Programming



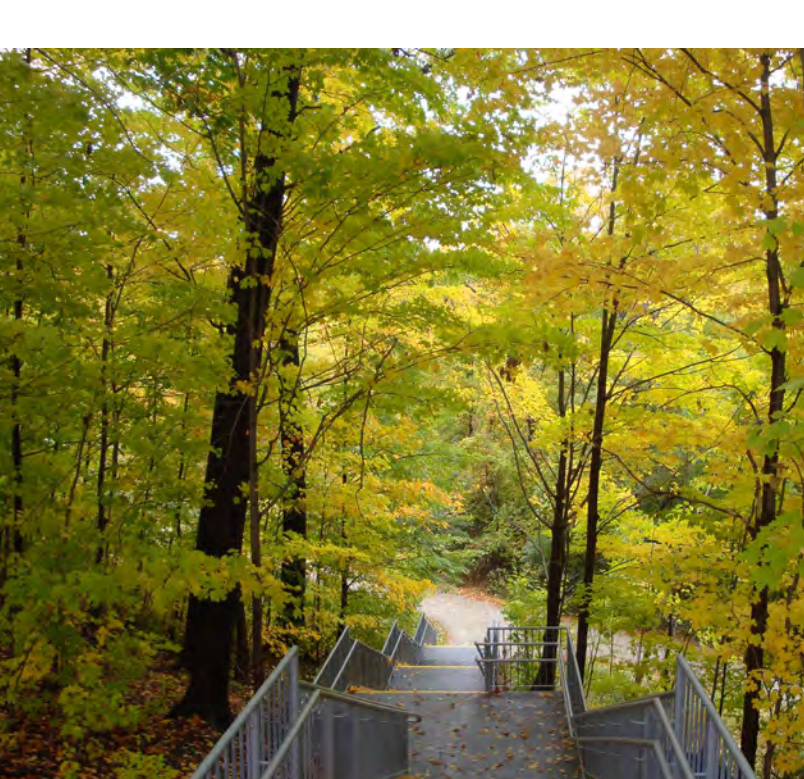
Farmers Markets on Parking Lots



Bike Tune Up Stations



Marked Crossings with Traffic Calming



Framing views of Natural Areas



Immersive Meadow Experience



Educational Signage



Play Spaces - Low Impact Wood Structures



Safe Crosswalks



Bike Repair Station

SECTION 3: LAWRENCE AVE COMMUNITY HUB

KENNEDY RD TO THOMSON MEMORIAL PARK

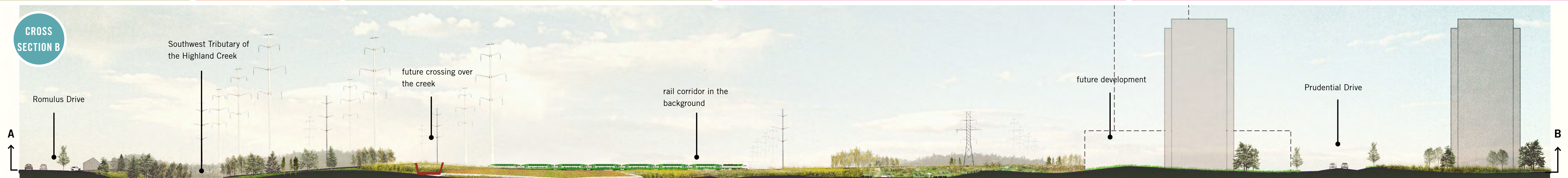


EDUCATION ZONE

WILD / IMMERSIVE ZONE

COMMUNITY HUB

COMMUNITY HUB



EMERGING VISION

In the short term, a new education hub can be created, offering many learning opportunities and clear access via the existing path. The adjacency to the rail corridor will offer a clear viewing point of the hydro corridor and the larger regional transportation network. Three types of community hubs will introduce different levels of activity. Firstly, abutting the Southwest Tributary of the Highland Creek, a potential new allotment garden can be created, potentially with an edible meadow. Its location by a tower apartment neighbourhood will encourage stewardship and engagement. Next, in the long term, the hydro corridor can bridge the relationship between the retail plaza and the neighbourhoods to the south. This can be a central meeting area or gathering space. Lastly, there is an opportunity to create a strong relationship between the future meadows and the healthcare uses along Lawrence Avenue. This allows for the community services and facilities to explore 'eco-health' strategies.

IDEAS



Pop-up Market



Edible Meadow



Gathering Spaces



Outdoor Community Events

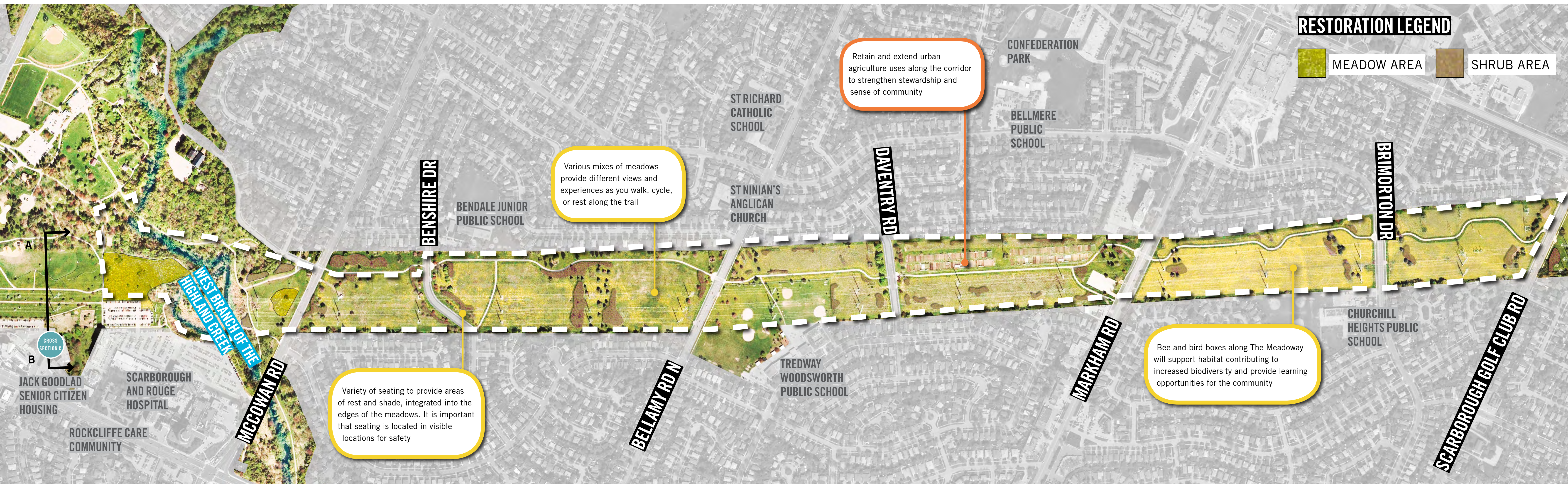
SECTION 4: SCARBOROUGH CENTRE BUTTERFLY TRAIL

THOMSON MEMORIAL PARK TO SCARBOROUGH GOLF CLUB RD

PERKINS
+ WILL

A project of
Toronto and Region
Conservation
Authority

The
Meadoway
COMMUNITY POWERED GREEN SPACES



WILD / IMMERSIVE ZONE

PASSIVE MEADOW



This established portion of the Gattineau trail will remain stable, connecting the West Branch Highland Creek to the Milliken Branch of Highland Creek (to the east in Section 5). This relaxing strip of The Meadoway will be enjoyable, safe, and accessible by the communities to the north and south for a recreational bike ride or short stroll.

IDEAS



Urban Agriculture



Resting Areas



Bird boxes (at The Meadoway)



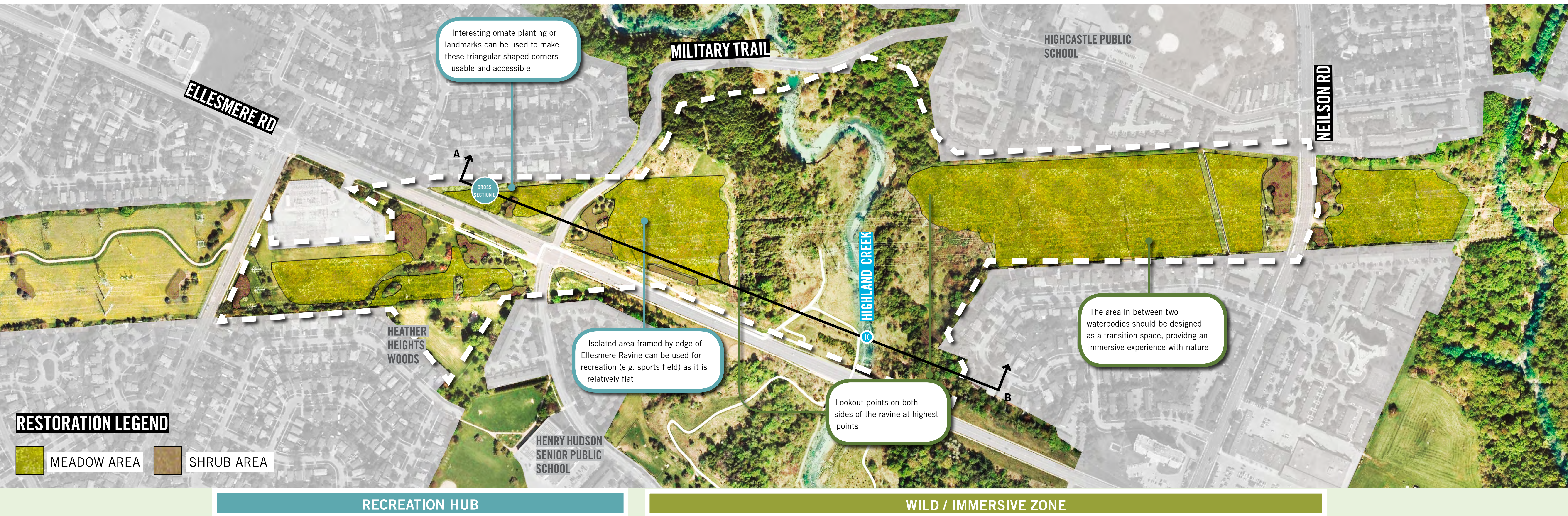
Adjacency to Wetland Habitats



Integrated Stormwater Management

SECTION 5: THE RAVINES

SCARBOROUGH GOLF CLUB RD TO NEILSON RD



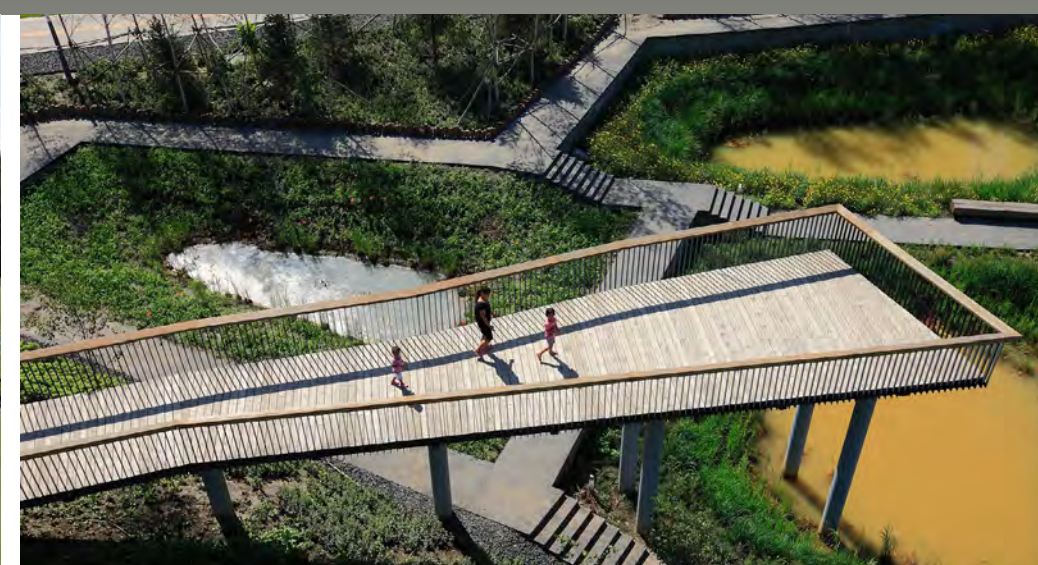
EMERGING VISION

The intersection of Ellesmere and Orton Park / Military Trail provides a unique separation of parcel sizes and shapes. To connect these together, both passive and active recreation can be encouraged, ranging from gathering spaces and immersive meadows, to a sportsfield. Preserving and highlighting the natural area around the ravine, two lookout points can allow visitors to enjoy the landscape around them, and towards the ravine.

IDEAS



Recreational Fields



Lookout platform



Lookout platform



Naturalized landforms



Pedestrian Bridge

SECTION 6: 401-EASTERN ENTRANCE

NEILSON RD TO CONLINS RD

PERKINS
+ WILL

A project of
Toronto and Region
Conservation
Authority

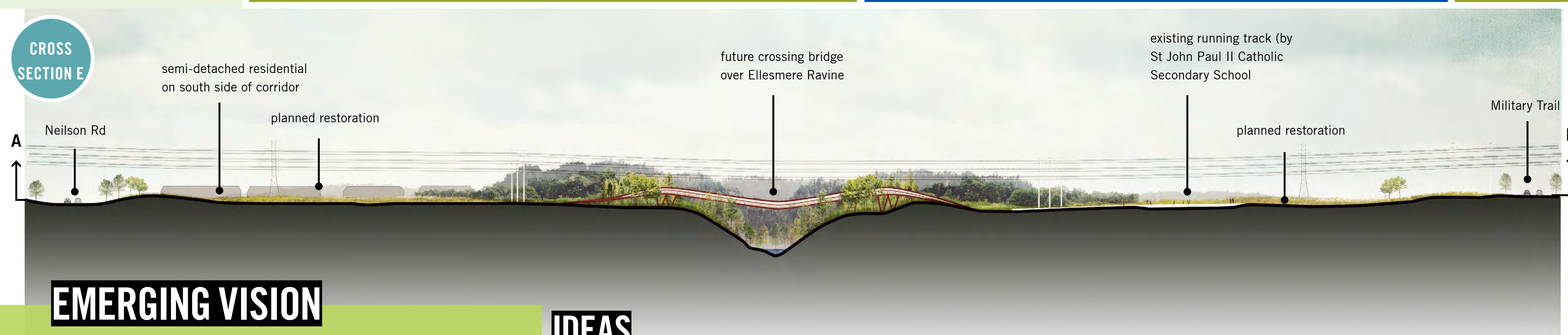
The
Meadoway
COMMUNITY POWERED GREEN SPACES



WILD / IMMERSIVE ZONE

EASTERN ENTRANCE

WILD / IMMERSIVE ZONE



EMERGING VISION

The span of green open space before the highway creates an enclave condition and entrance. Due to the rolling topography, garden planting could enhance the changes in grade, with a lookout point to highlight this. For safety purposes, restricted areas around the highway and accompanying infrastructure (e.g. maintenance storage facilities, landfill, etc.) should be visually and physically buffered with planting.

IDEAS



Farmers Market

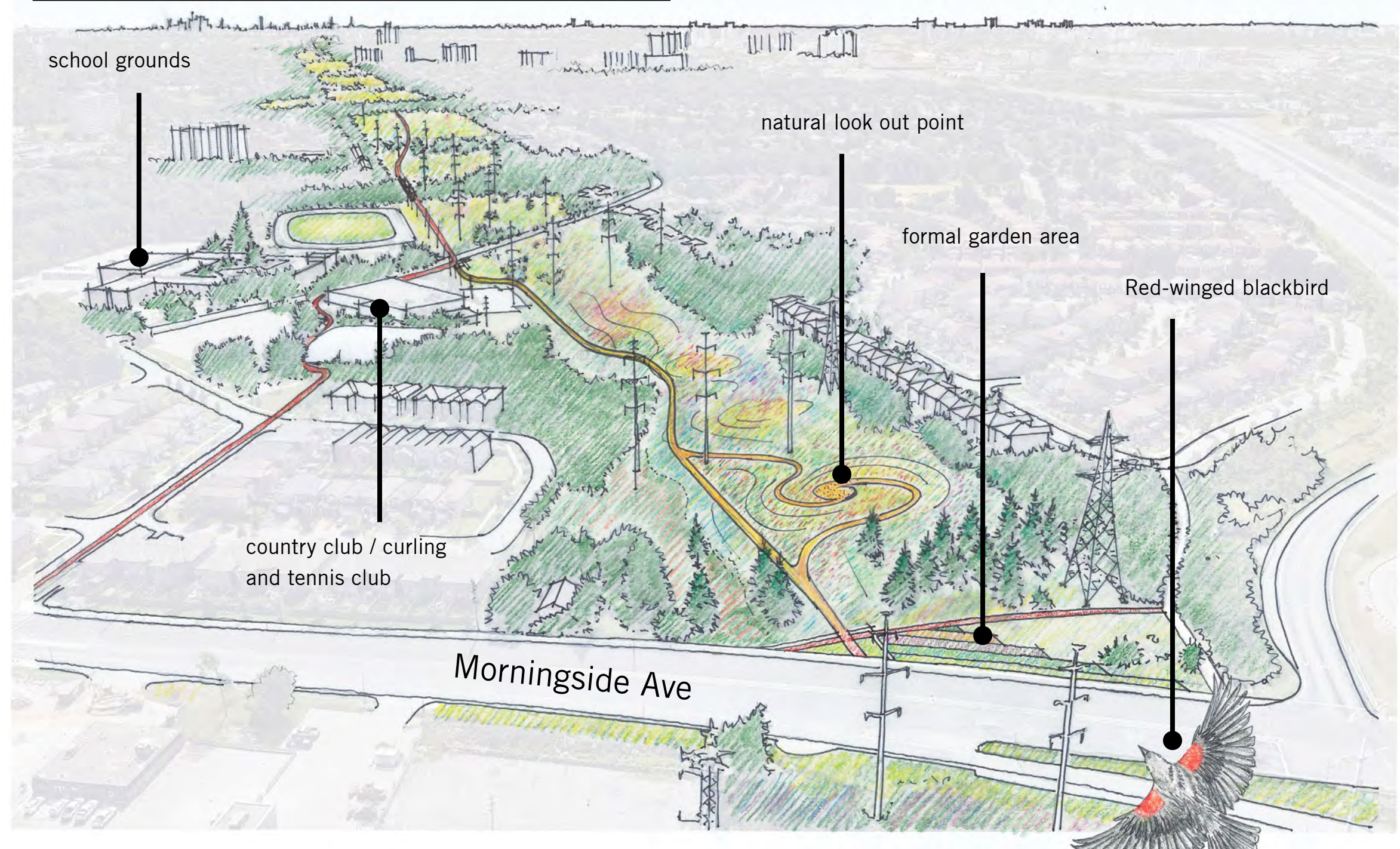


Sponge Parks for Stormwater Management



Immersive Meadows with Lookout

EASTERN ENTRANCE SKETCH



SECTION 7: THE ROUGE

CONLINS RD TO ROUGE NATIONAL URBAN PARK



PASSIVE MEADOW

WILD / IMMERSIVE ZONE

EMERGING VISION

This is the current site for Phase 2 of the meadow restoration occurring on the corridor (“Gatineau Site 2”). It will remain as a stable, maintained, and enjoyable stretch of The Meadoway, leading seamlessly into the Rouge National Urban Park. A future education hub should be located at the location where The Meadoway meets the Rouge and its trail network.

IDEAS



Immersive shelter for seating



Gateway signage



Viewing Platform



Pavement Signage



Gateway indicators



Spur Trails



Trail Signage



Bike Maintenance Station



Lookout Platform



Seating nooks