

NOTICE OF CONSTRUCTION

Publication date: April 2023

THE MEADOWAY - MEADOW RESTORATION & TRAIL CONSTRUCTION SECTION 3

Toronto and Region Conservation Authority (TRCA), in partnership with the City of Toronto, is undertaking the construction of The Meadoway, a project that will transform the existing Gatineau hydro corridor between the Don River Ravine and Rouge National Urban Park in Scarborough into a revitalized linear green space with restored meadow and a dedicated off-road multi-use trail network.

The first phase of implementation is planned for the section of hydro corridor between the TTC Line 3/GO Stouffville rail corridor and Brimley Road (see reverse). Meadoway restoration activities will include:

MEADOW RESTORATION ACTIVITIES

- Restoration of approximately 13 hectares of meadow habitat
- Mowing, tilling (turning over the soil), and seeding with cover crops (to be repeated several times throughout the growing season to prepare the soil for planting in the fall)
- Invasive plant management, buffer mowing and garbage collection

**Anticipated restoration timeline — April 2023 to End of December 2023 between
TTC Line 3/GO Stouffville rail corridor to Brimley Road**

MULTI-USE TRAIL CONSTRUCTION

- Construction of the Section 3 Phase 1 trail (approx. 1,140 m of asphalt paved trail) including rest nodes, signage and line painting. Updated information will be circulated when the start date for implementation is confirmed.

Anticipated construction timeline — TBD

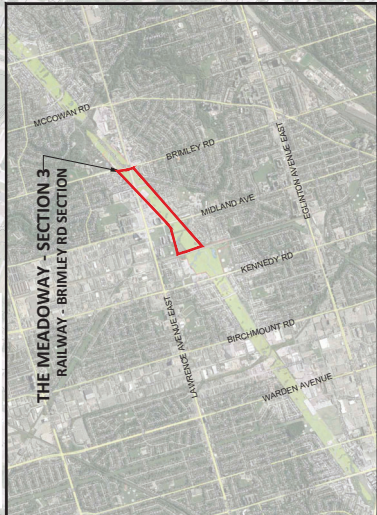
If you are interested in receiving more information about this project or being included on future updates, please contact:

Lorraine Chadwick, CET
Project Manager, Project Management Office
Toronto and Region Conservation Authority
Telephone: (365) 566-2346
Email: info.themeadoway@trca.ca
Website: www.themeadoway.com

LEGEND	
	PROPERTY LINE
	6m WIDE HYDRO ACCESS
	PROPOSED PEDESTRIAN TRAIL
	SHRUB NODE PLANTING
	PROPOSED MEADOW
	PROPOSED LOW MEADOW
	PROPOSED PROJECT SIGN
	PROPOSED BIRD BOX
	PROPOSED BUMBLE BEE NEST BOX
	PROPOSED MONITORING PLOT
	PROPOSED PORTA POTTY



SITE LOCATION MAP



THE MEADOWWAY - MEADOW RESTORATION & TRAIL CONSTRUCTION

SECTION 3